

### RISK LEVEL



### KEY FIGURES

NAV (cap.) at 31/07/2019 (en USD)

271.22

NAV (dis.) at 31/07/2019 (en USD)

126.93

Total assets of the fund (in mio USD)

32.32

Yield (for 1 year)

1.98 %

Yield (for 3 years)

3.53 %

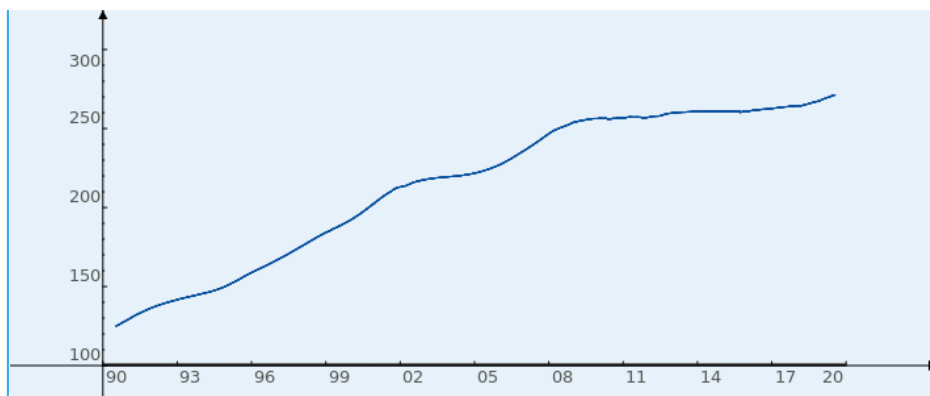
Yield (for 5 years)

3.98 %

### CHARACTERISTICS OF THE FUND

|                                   |                    |
|-----------------------------------|--------------------|
| Funds                             | LUXCASH US-DOLLARS |
| NAV                               | 271.22 USD         |
| Reference Currency                | USD                |
| Date of issue                     | 16/07/1990         |
| Calculation of the NAV            | Daily              |
| Custodian bank                    | BCEE               |
| ISIN code (cap.)                  | LU0030614696       |
| ISIN code (dis.)                  | LU0030615404       |
| Total assets of the fund (in mio) | 32.32 USD          |
| Cut-off time                      | 12:00 (GMT+1)      |

### PRICE EVOLUTION



### INVESTMENT POLICY

The subfund US-DOLLARS of the money market fund LUXCASH invests its assets in liquidities (deposit accounts) as well as in money market papers (bonds approaching their end term), denominated in USD.

### YIELD\*

|                               |          |
|-------------------------------|----------|
| YTD (02/01/2019)              | 1.22 %   |
| for 1 month (01/07/2019)      | 0.10 %   |
| for 3 months (30/04/2019)     | 0.49 %   |
| for 6 months (31/01/2019)     | 0.99 %   |
| for 1 year (31/07/2018)       | 1.98 %   |
| for 3 years (29/07/2016)      | 3.53 %   |
| for 5 years (31/07/2014)      | 3.98 %   |
| as from creation (16/07/1990) | 116.98 % |

\* based on the NAV of the capitalization shares

### CHARGES

|               |        |
|---------------|--------|
| Entry charges | 0.10 % |
| Exit charges  | 0.00 % |

### Charges taken from the fund over a year

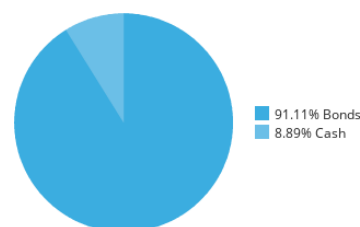
|                 |                               |
|-----------------|-------------------------------|
| Ongoing charges | CAP 0.75<br>% / DIS<br>0.79 % |
|-----------------|-------------------------------|

### Charges taken from the fund under certain specific conditions

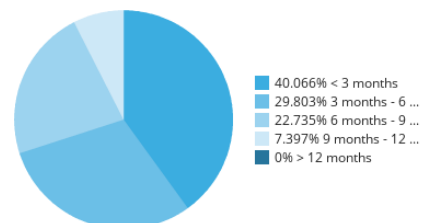
|                 |      |
|-----------------|------|
| Performance fee | None |
|-----------------|------|

Detailed Informations about the charges are in our publication "Tarification des instruments financiers" available at [www.bcee.lu](http://www.bcee.lu) and in our branches.

### INVESTMENT ALLOCATION AS PER 29/06/2019



### MATURITY STRUCTURE AS PER 29/06/2019



## IMPORTANT NOTICE

Please note that the above fund may only be distributed in Luxembourg. Shares of funds our lux|funds range may not be sold to US Persons.

Any subscription must be done on the basis of the fund's prospectus in effect at the time of subscription and the KIID ("Key Investor Information Document"), accompanied by the latest annual report or, if more recent, the latest interim report.

To determine the applicable net asset value ("NAV"), investors must refer to the cut-off time applicable for the compartment. Orders received before the cut-off time on day T are executed based on the NAV of the next banking day T+1 (in Luxembourg), except for funds of funds, for which the NAV two banking days later applies T+2.

The indicated historical performance levels are not a guarantee of similar growth in value in the future. Losses of value cannot be ruled out, and BCEE may not be held liable for them. The actuarial yield represents the yield obtained when a bond portfolio is held to maturity.

The level of risk is determined on the basis of the historical performance of the last five years and should not be considered a reliable indicator of the future risk profile of the compartment. It represents the risk of fluctuations in the net asset value per share and may change over time. Level 1 represents the lowest risk, and level 7 represents the highest risk. The higher the risk, the longer the recommended investment period. For details on the risks involved, please consult the KIID.

The entry and exit charges are those indicated in the prospectus. The actual applicable charges may be consulted in our brochure "General tariffs on financial instruments" available at [www.bcee.lu](http://www.bcee.lu) and at BCEE branches.

Tax information about the fund is available at [www.luxfunds.lu](http://www.luxfunds.lu) and at BCEE branches. It is recommended that investors consult their own legal and tax advisers before investing in the fund.

This document is provided solely for information purposes and cannot be considered legal, tax, or investment advice.