

RISK LEVEL



KEY FIGURES

NAV (cap.) at 25/05/2023 (en USD)

273.75

NAV (dis.) at 25/05/2023 (en USD)

122.36

Total assets of the subfund (in mio USD)

19.22

Aggregated Return (for 1 year)

1.77 %

Aggregated Return (for 3 years)

-0.27 %

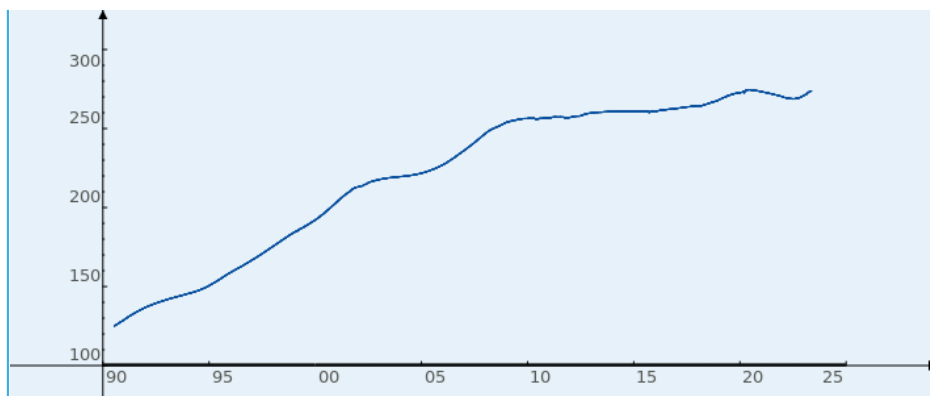
Aggregated Return (for 5 years)

3.22 %

CHARACTERISTICS OF THE SUBFUND

SUBFUND	LUX-CASH US-DOLLARS
NAV	273.75 USD
Reference Currency	USD
Date of issue	16/07/1990
Calculation of the NAV	Daily
Custodian bank	Spuerkeess
ISIN code (cap.)	LU0030614696
ISIN code (dis.)	LU0030615404
Total assets of the subfund (in mio)	19.22 USD
Cut-off time	12:00 (GMT+1)

PRICE EVOLUTION



INVESTMENT POLICY

The subfund US-DOLLARS of the money market fund LUX-CASH invests its assets in liquidities (deposit accounts) as well as in money market papers (bonds approaching their end term), denominated in USD.

AGGREGATED RETURN*

YTD (02/01/2023)	1.13 %
for 1 month (25/04/2023)	0.17 %
for 3 months (24/02/2023)	0.73 %
for 6 months (25/11/2022)	1.42 %
for 1 year (25/05/2022)	1.77 %
for 3 years (25/05/2020)	-0.27 %
for 5 years (25/05/2018)	3.22 %
as from creation (16/07/1990)	119.00 %

* based on the NAV of the capitalization shares

CHARGES

Entry charges	0.10 %
Exit charges	0.00 %

Charges taken from the fund over a year

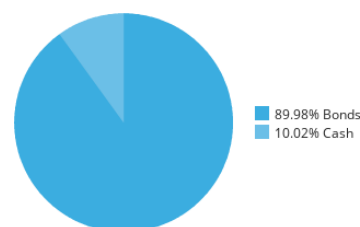
Ongoing charges	CAP 1.16 % / DIS 1.18 %
-----------------	----------------------------

Charges taken from the fund under certain specific conditions

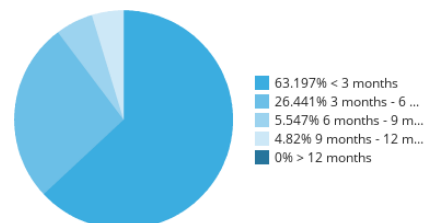
Performance fee	None
-----------------	------

Detailed Informations about the charges are in our publication "Principaux tarifs bancaires" available at www.spuerkeess.lu and in our branches.

INVESTMENT ALLOCATION AS PER 31/03/2023



MATURITY STRUCTURE AS PER 31/03/2023



IMPORTANT NOTICE

Please note that the above subfund may only be distributed in Luxembourg. Shares of funds of our lux|funds range may not be sold to US Persons.

Any subscription must be done on the basis of the fund's prospectus in effect at the time of subscription and the KIID ("Key Investor Information Document"), accompanied by the latest annual report or, if more recent, the latest interim report.

For every subscription today (day D) before noon (Luxembourg time), the NAV applicable will be the NAV dated today (D), which will be calculated and published the next day (day D+1), except for Sundays and holidays.

The indicated historical performance levels are not a guarantee of similar growth in value in the future. Losses of value cannot be ruled out, and Spuerkeess may not be held liable for them. The actuarial yield represents the yield obtained when a bond portfolio is held to maturity.

The level of risk is determined on the basis of the historical performance of the last five years and should not be considered a reliable indicator of the future risk profile of the compartment. It represents the risk of fluctuations in the net asset value per share and may change over time. Level 1 represents the lowest risk, and level 7 represents the highest risk. The higher the risk, the longer the recommended investment period. For details on the risks involved, please consult the KIID.

The entry and exit charges are those indicated in the prospectus. The actual applicable charges may be consulted in our brochure "General tariffs on financial instruments" available at www.spuerkeess.lu and at Spuerkeess branches.

Tax information about the fund is available at www.luxfunds.lu and at Spuerkeess branches. It is recommended that investors consult their own legal and tax advisers before investing in the fund.

This document is provided solely for information purposes and cannot be considered legal, tax, or investment advice.