



## Download and installation of the LuxTrust Middleware



(using Internet Explorer 11)



Before starting the installation of the LuxTrust Middleware, please note that :

- you need **Administrator rights** on your computer ;
- you need one of the following **operating systems** in combination with the following **web browsers** :

Windows XP (32bit) : **Internet Explorer 8** or higher  
**Firefox 25** or higher

Windows Vista : **Internet Explorer 9** or higher  
**Firefox 25** or higher

Windows 7 : **Internet Explorer 9** or higher  
**Firefox 25** or higher  
**Google Chrome 30** or higher

Macintosh OS 10.6 / 10.7 : **Safari 5** or higher  
**Firefox 25** or higher

**Please do not yet connect your LuxTrust card reader / Signing Stick to your computer; if it is connected, please disconnect it.**

---

### Steps to be followed :

- ◆ Please enter the following address in the address bar of your web browser :

<http://drivers.luxtrust.lu/>

- ◆ Please download the LuxTrust Middleware for your operating system by clicking on the link.

[Support](#) > [Downloads](#) > Middleware

## Middleware

**IMPORTANT :** Please install the Middleware BEFORE connecting your device




**Smartcard, Signing Stick & eID Card**

 [Windows 32-bit](#)

 [Windows 64-bit](#)

 [Ubuntu 32-bit](#)

 [Ubuntu 64-bit](#)

 [Mac OS X 10.7 \(Lion\)](#) (will be available soon for eID)

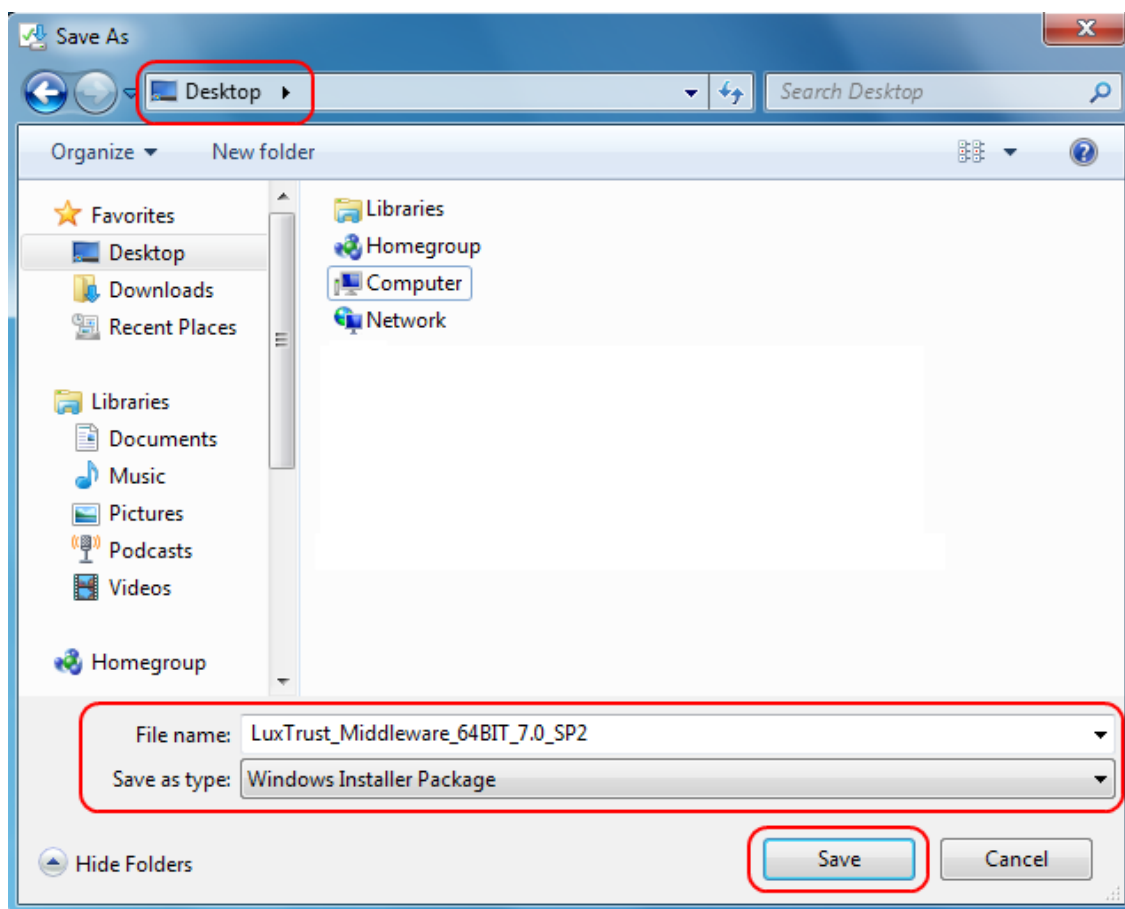
 [Mac OS X 10.8 \(Mountain Lion\)](#) (will be available soon for eID)

 [Mac OS X 10.9 \(Mavericks\)](#) (will be available soon for eID)

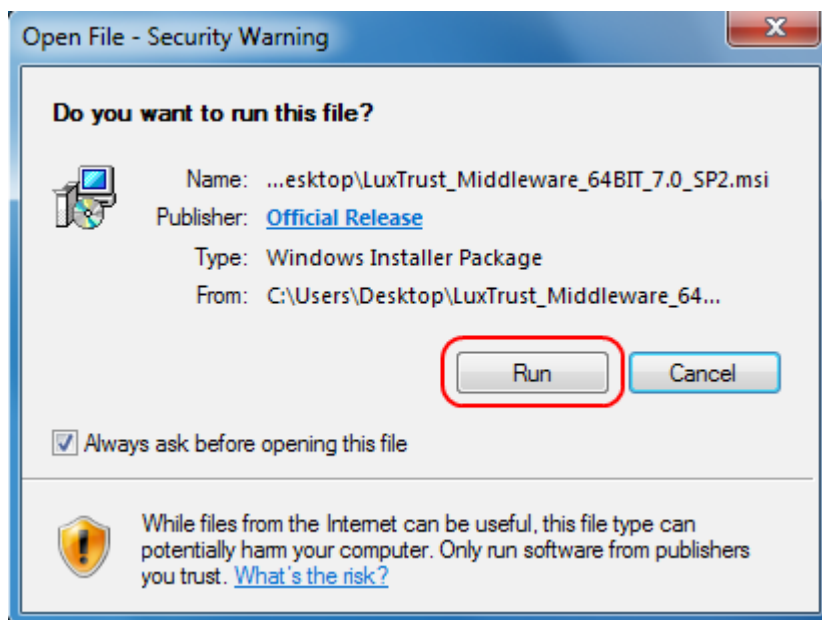
- ◆ Please **'Save as'** the Middleware on your computer.



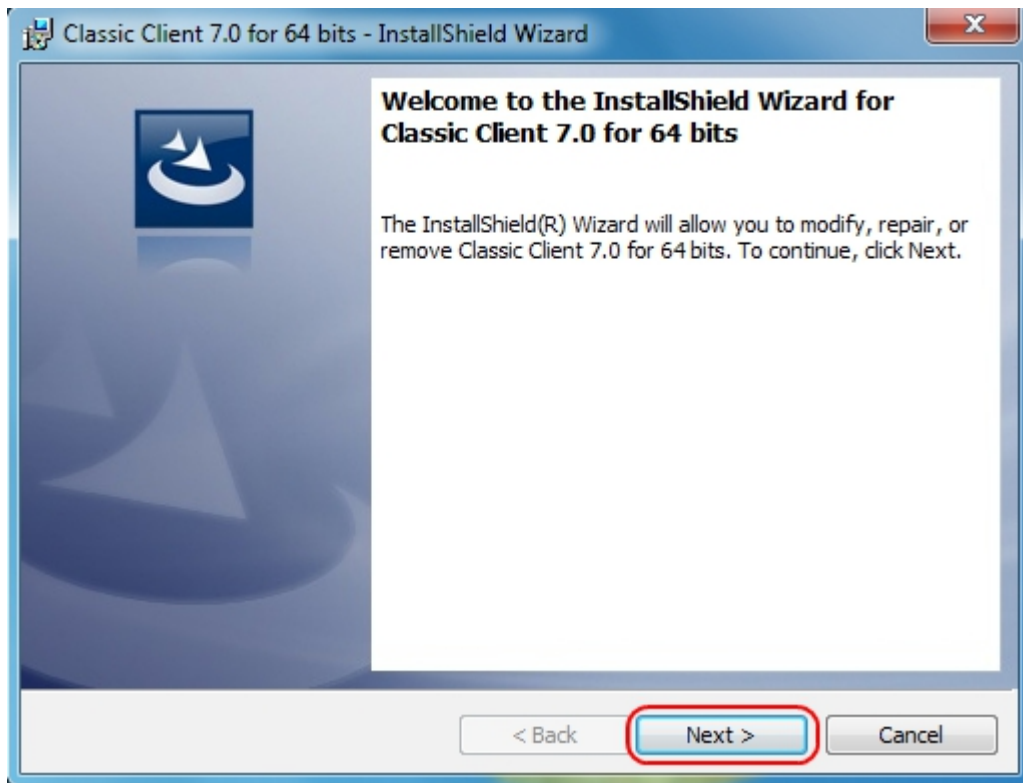
- ◆ For practical reasons, we recommend to preferentially save the file on your desktop.



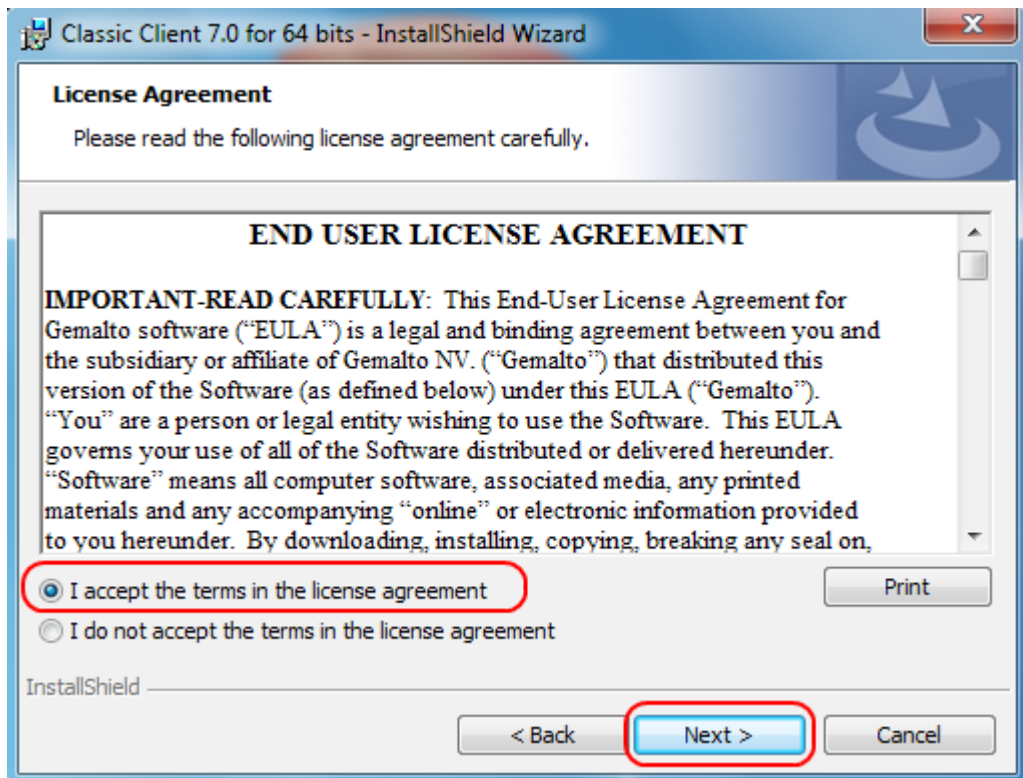
- ◆ After having completed the download , please click on '**Run**' for starting the installation.



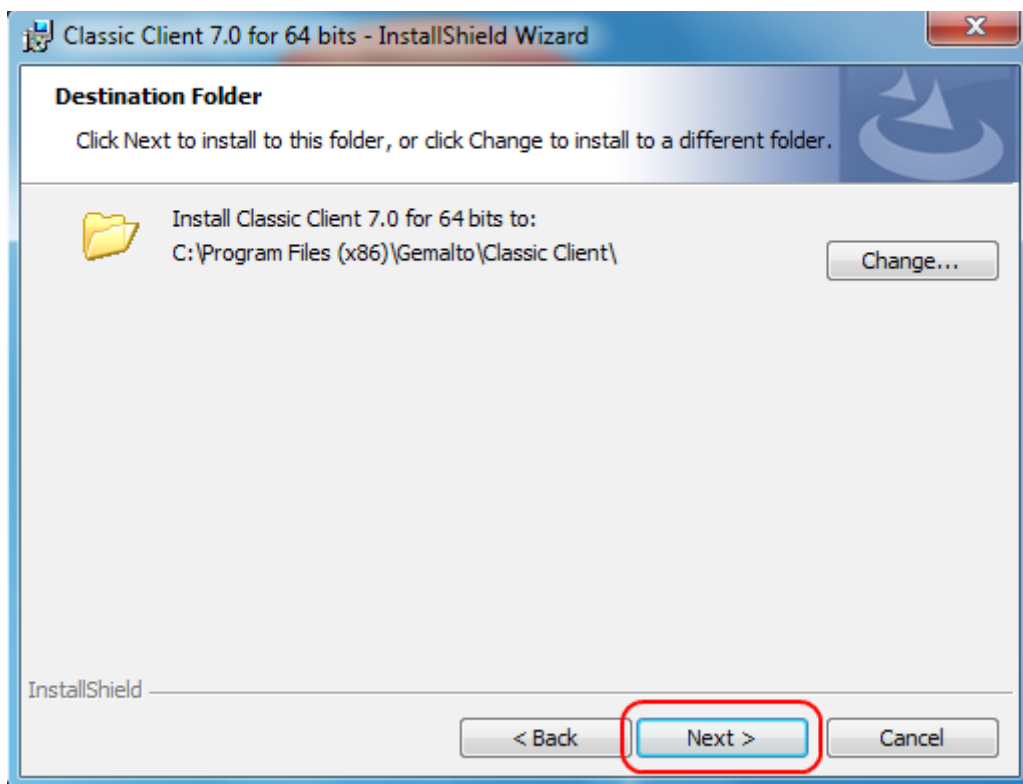
- ◆ The installation of the Middleware starts. Please click on **'Next'**.



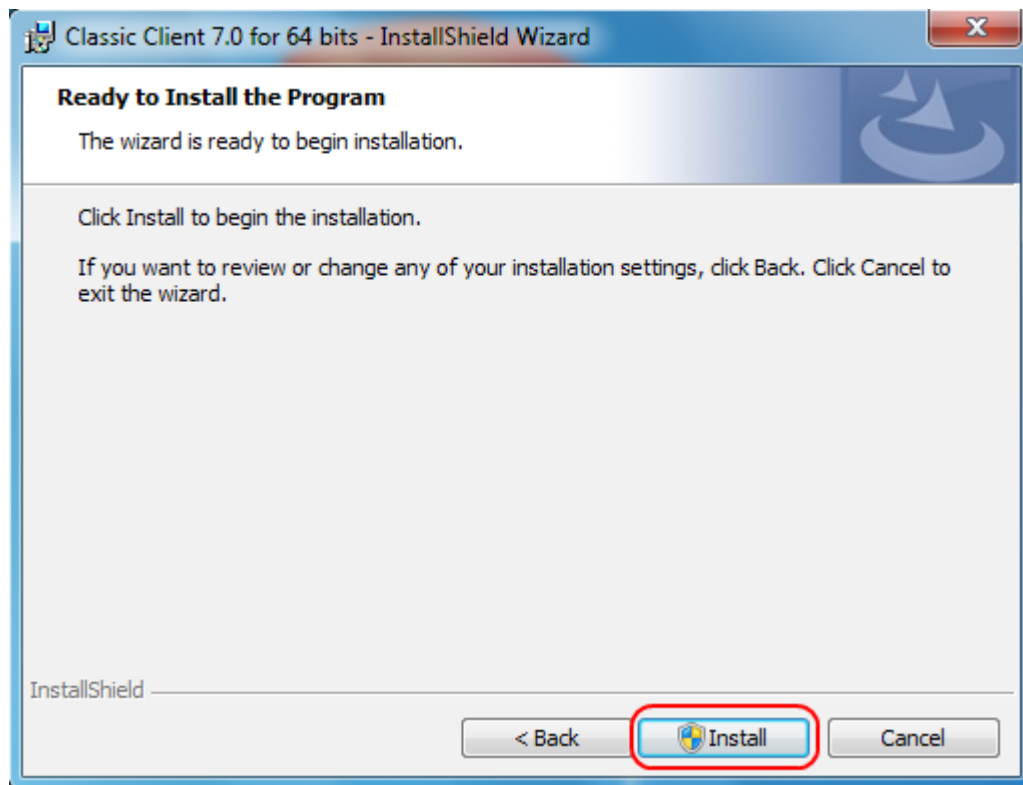
- ◆ Please accept the terms of the license agreement and click on **'Next'**.



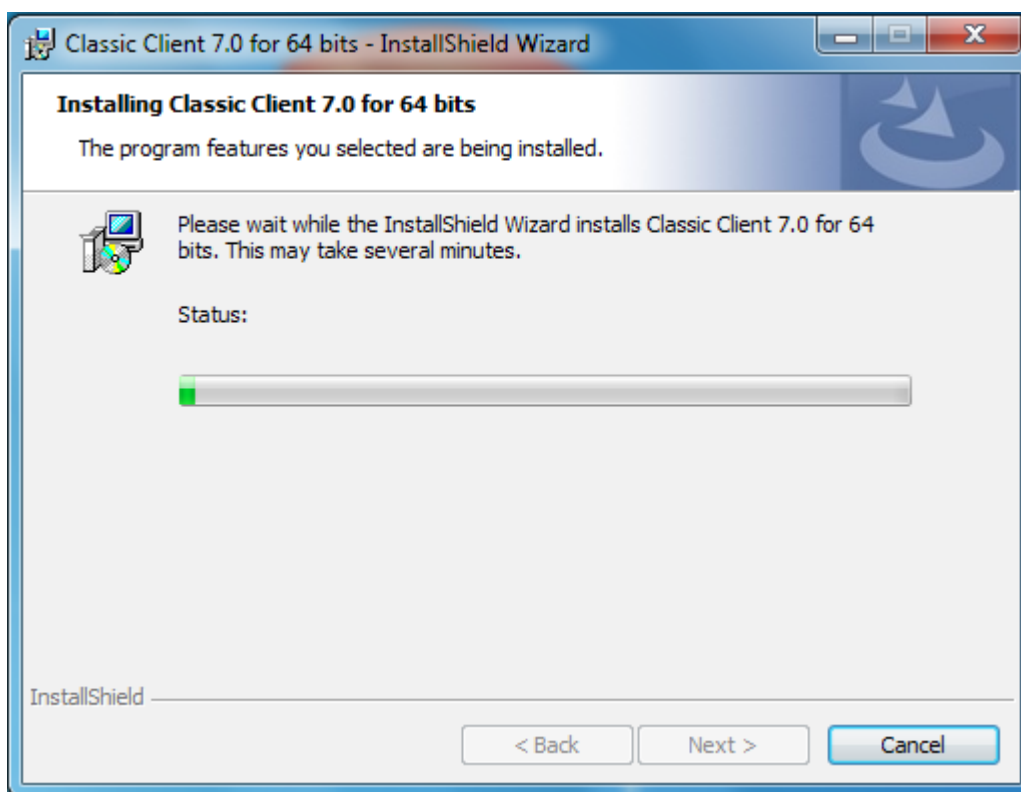
◆ The installation path is shown. Please click on **'Next'**.



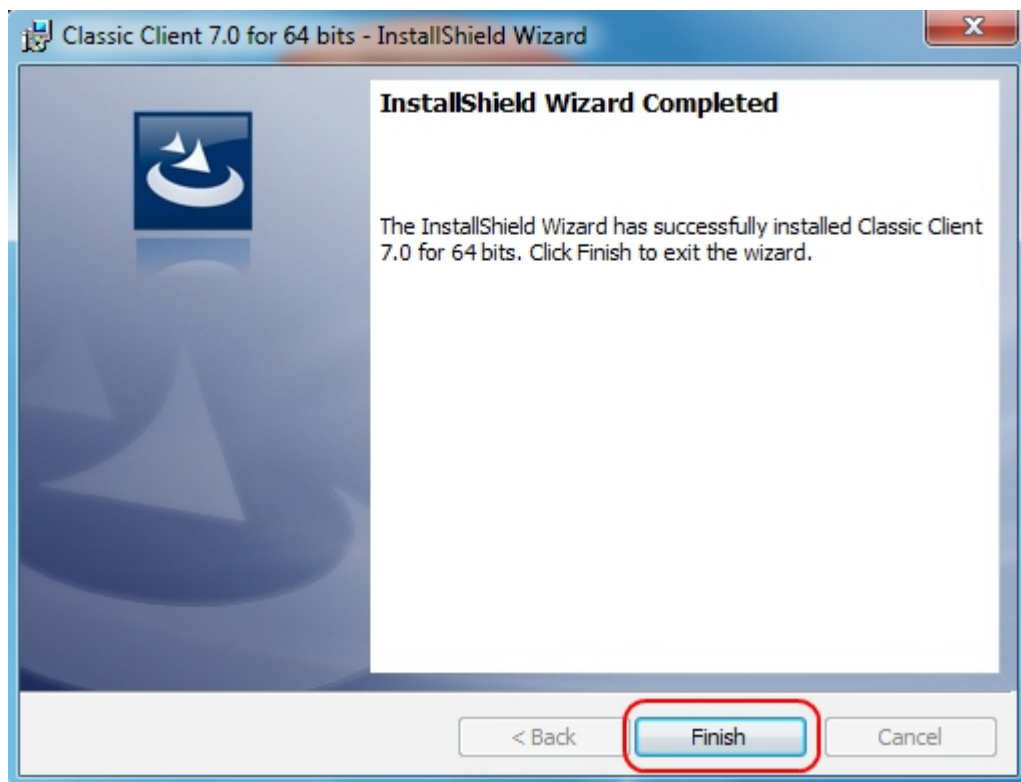
◆ Please now click on **'Install'**.



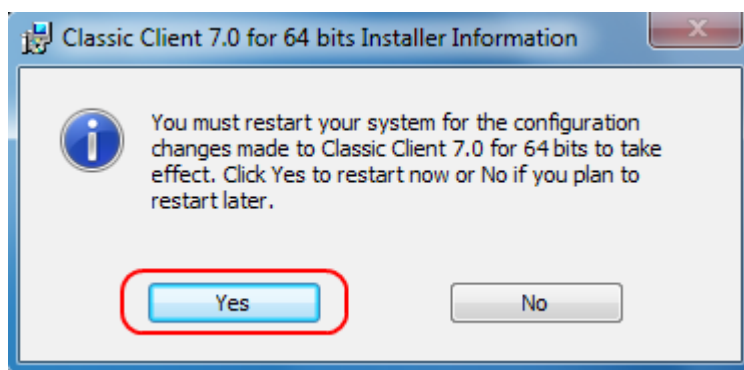
- ◆ A progression bar appears on your screen. Please wait.



- ◆ After completion of the installation, please click on '**Finish**'.



- ◆ Please restart your computer by clicking on **'Yes'**.



#### **SUPPORT AND ASSISTANCE**

If you still need assistance after reading all of the provided help documentation, please refer to the FAQs on the LuxTrust website [www.luxtrust.lu](http://www.luxtrust.lu) and contact, if necessary, the LuxTrust Helpdesk at 24 550 550 (MO-FR 8:00-19:00, SA 9:00-18:00) or by e-mail at [helpdesk@luxtrust.lu](mailto:helpdesk@luxtrust.lu).